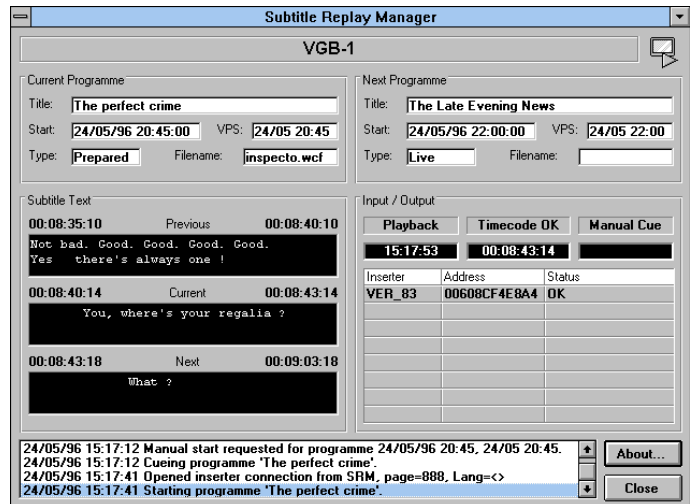


ProSTAR - Automated Subtitle Replay System

SysMedia's ProSTAR subtitle replay system provides automated subtitle output to teletext subtitle inserters. ProSTAR can operate completely automatically under the control of a broadcast automation system, or with various levels of manual intervention.

- Subtitle Replay Manager**
 fully automated subtitle replay controlled by station automation system (or VPS/PDC)
- Data Feed Handler**
 schedule system interface for automated download to subtitle playout database
- Subtitle Schedule Editor**
 Simple manual creation of full or partial subtitle playlist, amendment of downloaded programme schedule and assignment of subtitle files
- Cue Utility**
 manual override allowing operators to respond quickly to automation anomalies, schedule changes or emergencies



The system uses its database of scheduled programmes and corresponding subtitle files, controlled by the optional automation system and schedule download interfaces, to replay subtitles from a file server (standard EBU STL file or WinCAPS wcf/w32 file format) against a VITC/LTC timecode input from the playout server or tape system. Output can be via IP or serial to a single inserter (per channel) or to a secondary (e.g. back-up) inserter as well, or (via a suitable optional interface) to an array of multiple SysMedia inserters.

Under normal circumstances the automation system provides all the information that ProSTAR needs to manage subtitle output. ProSTAR's own event list (manually maintained or populated from a schedule download via DFH) provides added resilience - with the Cue Utility allowing manual override at any time.

ProSTAR even has its own timecode "flywheel" to maintain playout automatically if timecode input is interrupted.

During programmes with live subtitling the automation is overridden by the output from SysMedia's WinCAPS real-time subtitling software.

Contact SysMedia for more information on multi-language, multi-channel applications for DVB, open-captions and HD as well as teletext.

